

FOREST RIVER PARK MODELS



A BERKSHIRE HATHAWAY COMPANY



++ Photos courtesy of Kampgrounds of America, Inc.



KOA DELUXE CABINS

FOREST RIVER, INC. PARK MODEL DIVISION

Founded in 1996, Forest River, Inc. has grown to become one of the largest recreational vehicle manufacturers in the United States. As a division of Forest River, Inc., a wholly owned subsidiary of Berkshire Hathaway, Forest River Park Models offers the financial stability afforded to their customers that no other recreational products company in the industry can.

You are making an investment. Forest River wants your investment to hold its value. Forest River's years of park model experience have taught us how to develop a product that is both well-built and price competitive. Combining superior construction, production techniques and quality components have made our products the best in the industry.

To contact a representative for additional information or to request a quote, call (574) 264-7163 or visit our website at www.forestriverinc.com/ParkModels/KOADeluxeCabins



KOA DELUXE CABINS STANDARD FEATURES*

INTERIOR

- HARDWOOD INTERIOR PASSAGE/POCKET DOORS
- LEVER DOOR HANDLES
- 90 INCH SIDEWALL HEIGHT
- 1" X 6" T&G PINE WALLS/CEILING
- 1" PINE TRIM THROUGHOUT
- CATHEDRAL CEILINGS (EXCEPT LOFT)
- VAULTED GABLE W/PENT WNDW (PER MODEL)
- 2" WHITE FAUX WOOD WINDOW BLINDS
- CONGOLEUM LG150 VINYL PLANK FLOORING
- KOA CABIN LIGHTING PACKAGE
- BRUSHED SATIN FIXTURES THROUGHOUT
- SMOKE DETECTOR ON CEILING
- LP GAS-LEAK DETECTOR
- FIRE EXTINGUISHER W/METAL BRACKET
- VINYL MOP BOARD THROUGHOUT
- PREP FOR WALL MOUNT TV – MAIN AREAS
- CEILING FAN W/LIGHT KIT – MAIN AREAS
- DOUBLE SWITCHES FOR CEILING FAN
- WOOD DINETTE TABLE & 4 CHAIRS
- HIDE-A-BED SOFA W/AIR MATTRESS
- QUEEN PILLOW-TOP MATTRESS W/BOX SPRINGS
- METAL PALTFORM BED BASE
- 2-BUNK MATTRESSES IN BUNK ROOM (PER PLAN)
- 2-BUNK MATTRESSES IN LOFT(PER PLAN)
- POWDER COATED STEEL BUNK RAIL
- POWDER COATED STEEL BUNK LADDER
- COAT HOOKS STRATEGICALLY PLACED
- HIGH-DEFINITION LAMINATE COUNTERTOPS
- 3" LAMINATE BACKSPLASHES
- STAINLESS STEEL KITCHEN SINK
- COMPOSITE BATH SINK W/OVERFLOW
- LIGHTED BATH EXHAUST FAN CURVED SHOWER ROD W/CURTAIN
- RETRACTABLE CLOTHES LINE

- 1 PC. FIBERGLASS TUB/SHOWER OR SHOWER STALL
- DUAL TOILET TISSUE HOLDER
- SINGLE LEVER FAUCET – KITCHEN & BATH
- CONCEALED HINGES ON CABINET DOORS
- "DESIGNER" CABINET DOOR PULLS
- APPLIANCE PACKAGE (PER PLAN)

EXTERIOR

- WHITE THERMOPANE WINDOWS W/LOW-E GLASS
- 12" FRONT & REAR OVERHANGS
- 8" SIDEWALL EAVES
- GREEN METAL ROOF
- PRE-FINISHED CEMENT LAP SIDING-MAHOGANY COLOR
- 36"WHITE EXTERIOR FRONT DOOR W/INTERNAL BLIND
- "CABIN" STYLE PORCH LIGHT @ EXTERIOR DOOR
- EXTERIOR GFI RECEPTACLE
- 5/4 COMPOSITE DECKING ON PORCH MODELS
- PORCH SUPPORTS/ RAILINGS PAINTED TO MATCH TRIM

UTILITIES/ INSULATION

- R-14 BATTEN INSULATION IN FLOOR
- R-11 BATTEN INSULATION IN WALLS
- R-28 BATTEN INSULATION IN ROOF
- OSB EXT. SHEATHING W/HOUSEWRAP WIND BARRIER
- RADIANT HEAT W/INDIVIDUAL THERMOSTATS
- 50 AMP ELECTRICAL SERVICE W/POWER CORD
- 20 GAL ELECTRIC WATER HEATER
- THRU-WALL A/C UNIT(S) – PER PLAN
- ILLUMINATED LIGHT SWITCHES – PER LOCATION

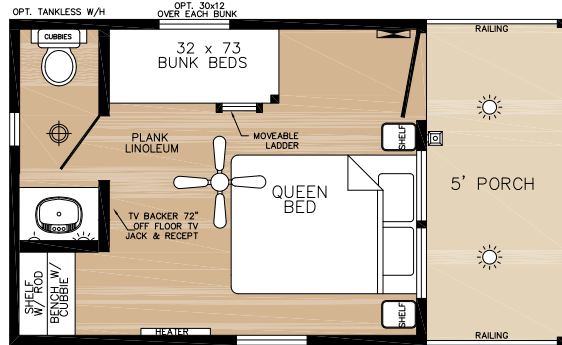
- ROCKER STYLE LIGHT SWITCHES - THROUGHOUT
- BLACK IRON GAS PIPING
- PEX WATER LINES W/LOW POINT DRAIN
- IN-LINE WATER SHUT OFF VALVES @ TOILET & SINKS
- CONSTRUCTION FEATURES
- SOLID STEEL DUAL I-BEAM CHASSIS
- DETACHABLE HITCH
- POLY-WOVEN SIMPLEX UNDERBELLY MATERIAL
- 2" X 6" DOUBLE PERIMETER FLOOR JOISTS
- 2" X 6" FLOOR JOISTS – 16" O.C.
- 2" X 4" SIDEWALL STUDS – 16" O.C.
- T & G FLOOR DECKING
- RAFTERS – 16" O.C.
- INTEGRATED STEEL STRAPPING CONSTRUCTION
- KOA APPROVED
- ANSI 119.5 APPROVED
- RVIA APPROVED



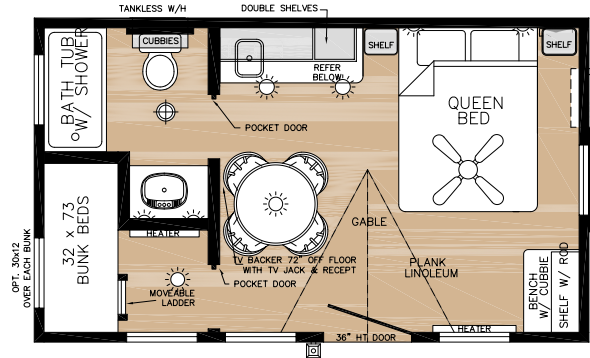
A BERKSHIRE HATHAWAY COMPANY

*STANDARD FEATURES VARY BY FLOORPLAN

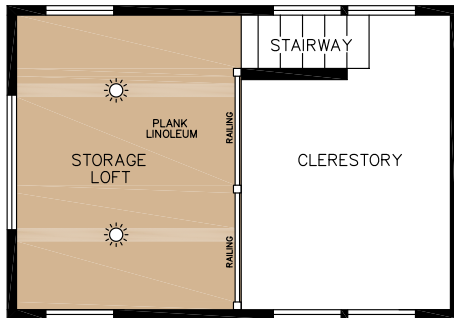
MODEL: KOA-15FP
 SIZE: 12'x20' W/ PORCH



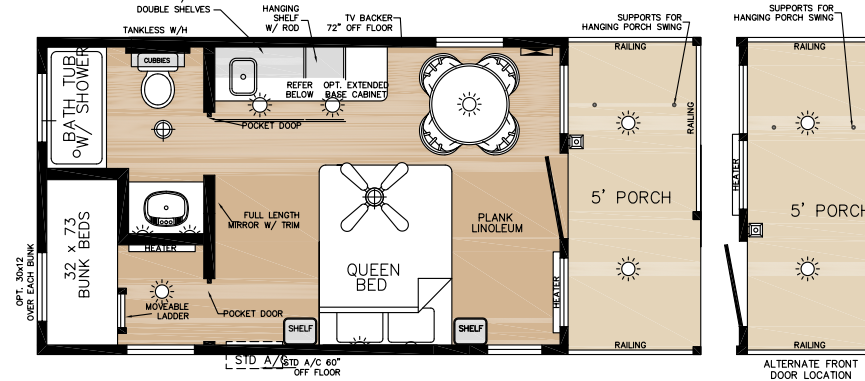
MODEL: KOA-20S
 SIZE: 12'x20'



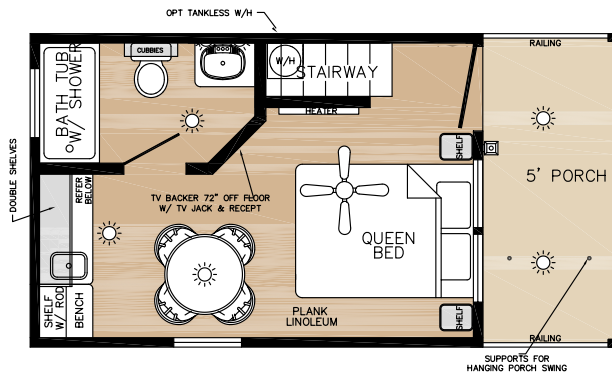
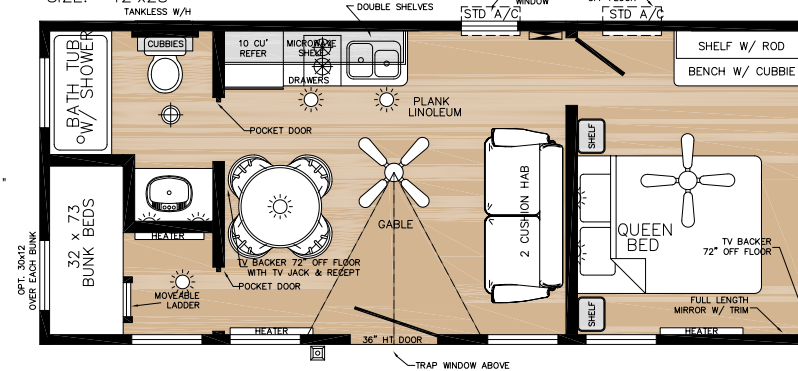
MODEL: KOA-17FP
 SIZE: 12'x22' W/ PORCH



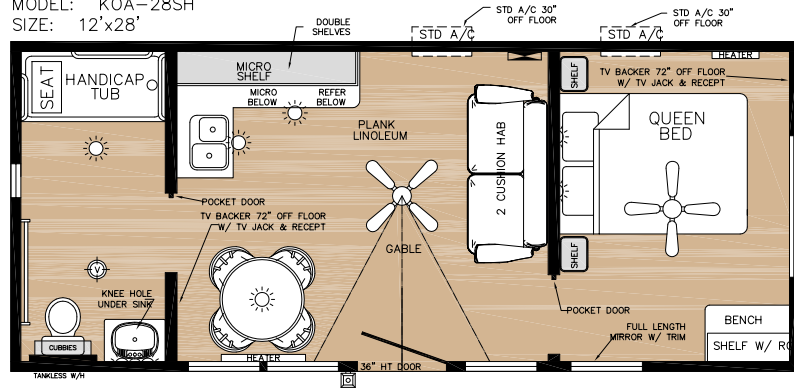
MODEL: KOA-20FP
 SIZE: 12'x25' W/ PORCH



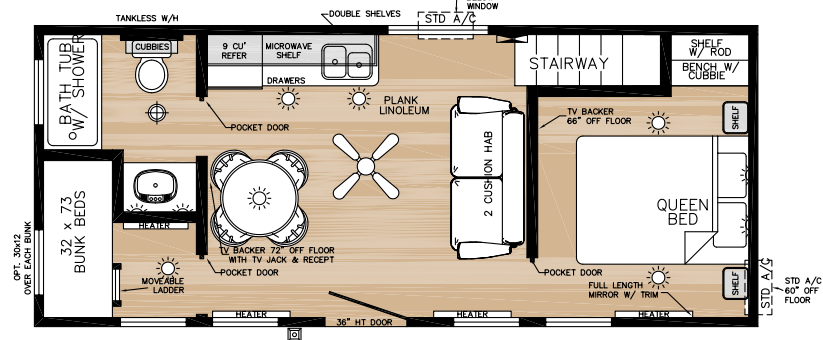
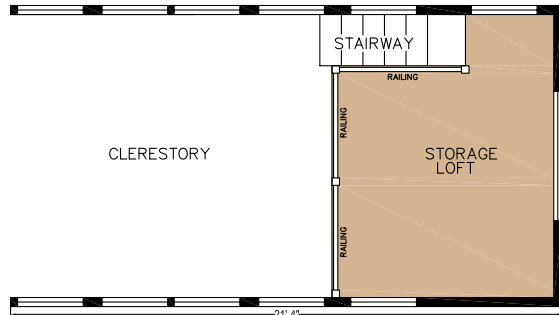
MODEL: KOA-28S
 SIZE: 12'x28'



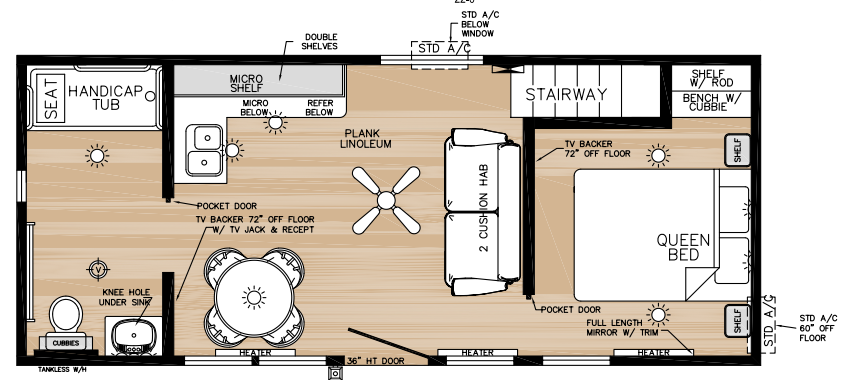
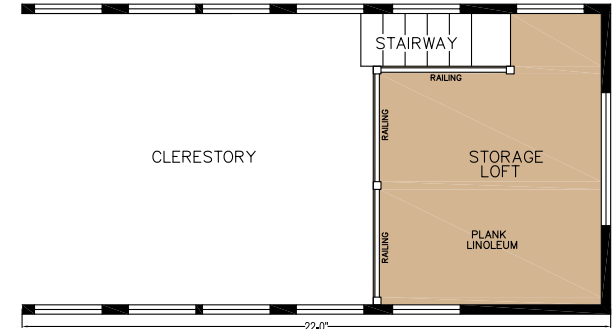
MODEL: KOA-28SH
 SIZE: 12'x28'



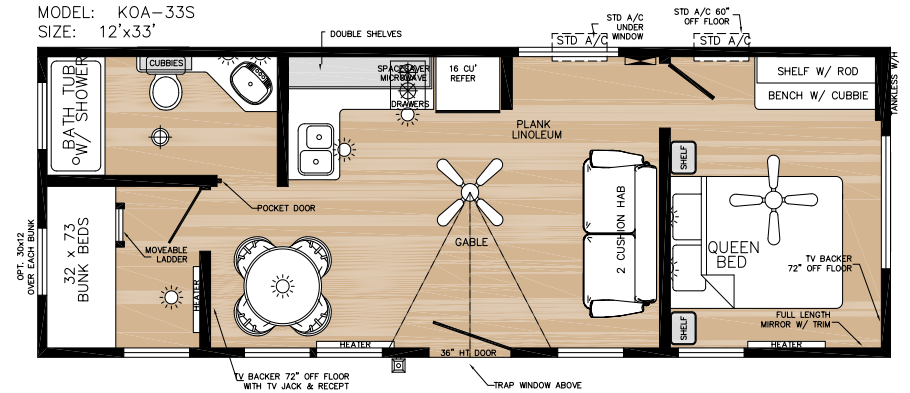
MODEL: KOA-28SL
 SIZE: 12'x28'



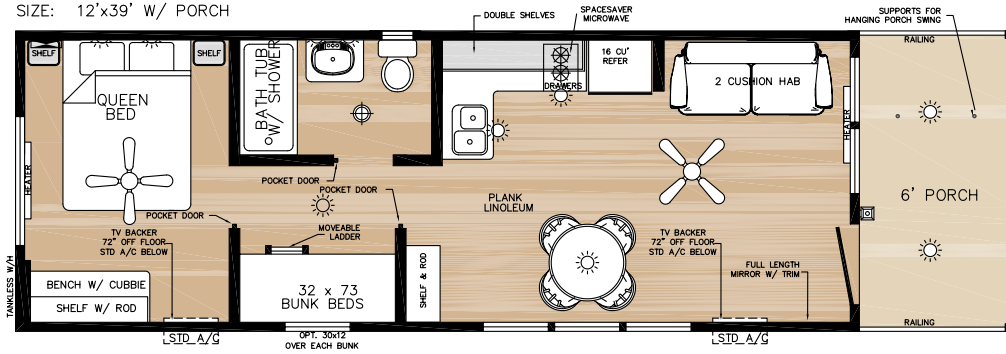
MODEL: KOA-28SHL
 SIZE: 12'x28'



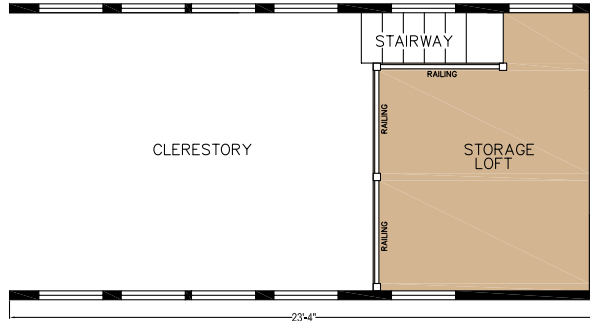
MODEL: KOA-33S
 SIZE: 12'x33'



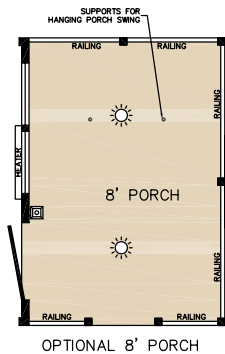
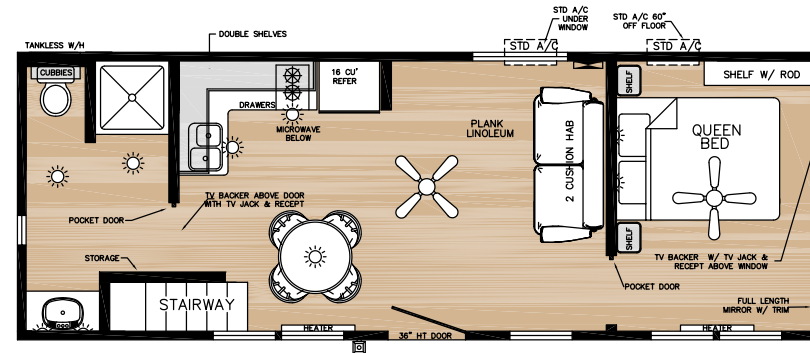
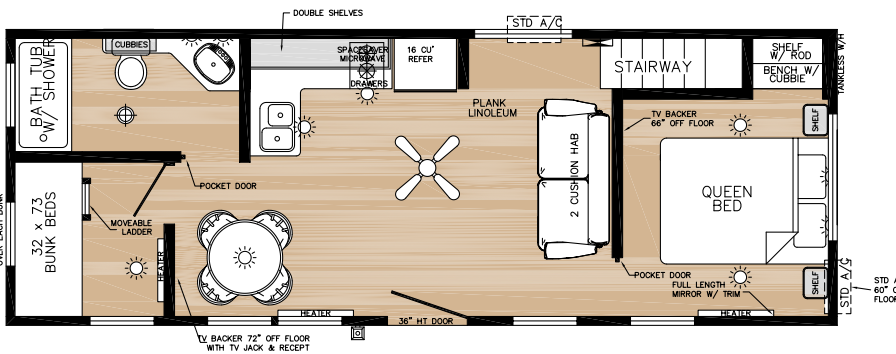
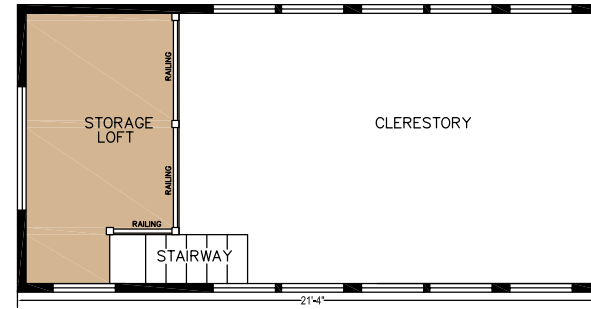
MODEL: KOA-33FP
 SIZE: 12'x39' W/ PORCH



MODEL: KOA-33SL
 SIZE: 12'x33'

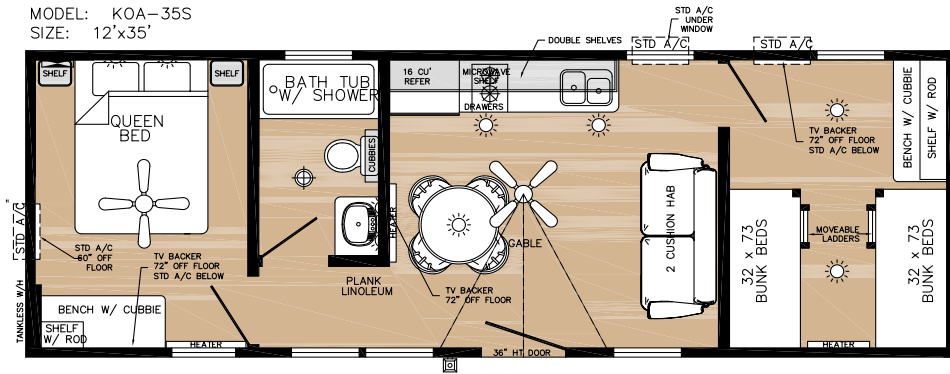


MODEL: KOA-33SHPL
 SIZE: 12'x33'

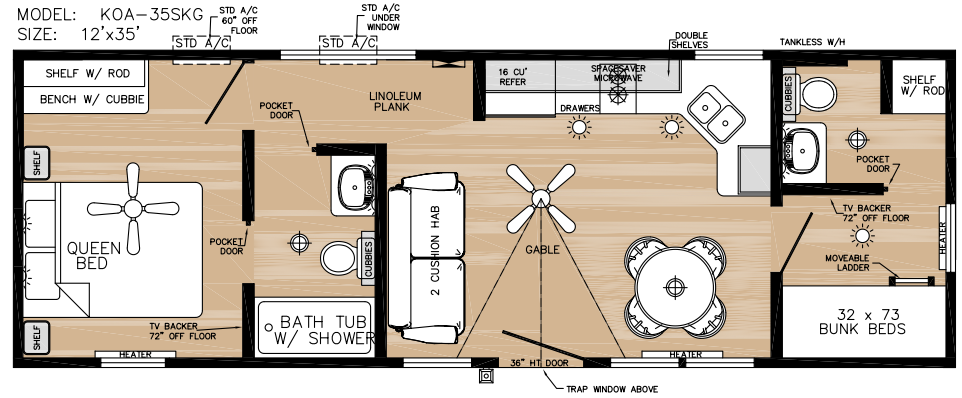


OPTIONAL 8' PORCH

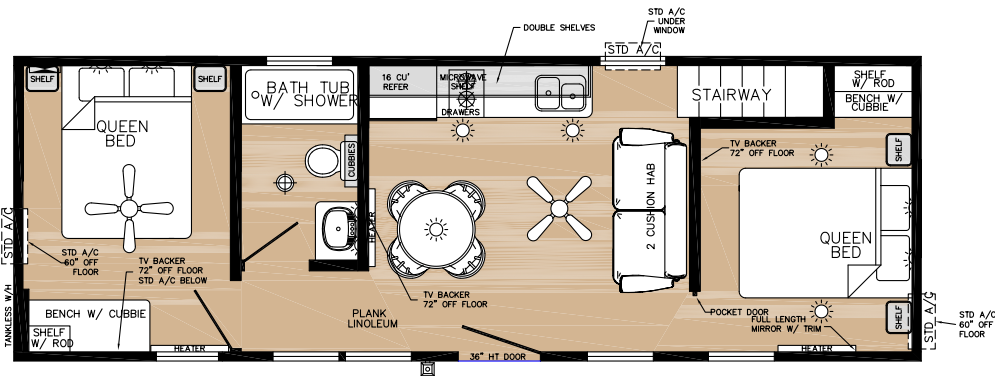
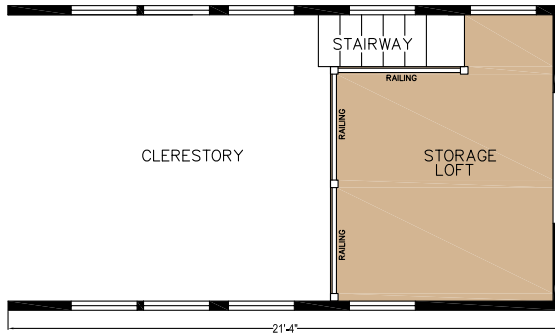
MODEL: KOA-35S
 SIZE: 12'x35'



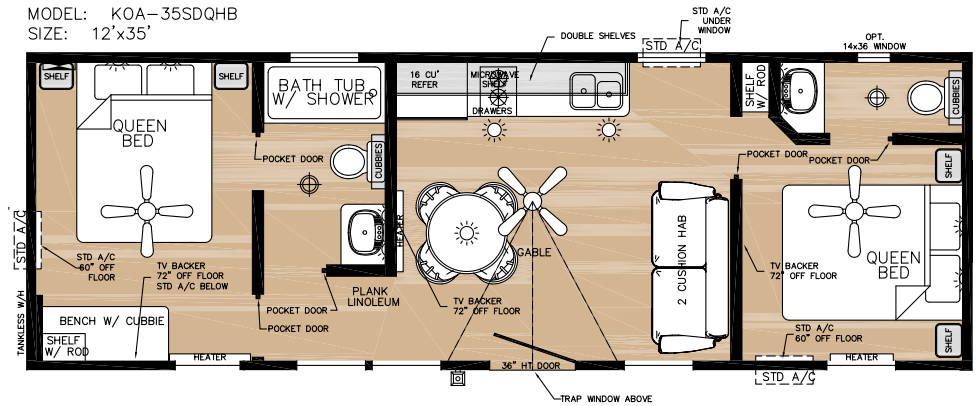
MODEL: KOA-35SKG
 SIZE: 12'x35'



MODEL: KOA-35SL
 SIZE: 12'x35'



MODEL: KOA-35SDQHB
 SIZE: 12'x35'





++ Photos courtesy of Kampgrounds of America, Inc.



Forest River, Inc. Park Model Division
28936 Phillips St.
Elkhart, IN 46514
Phone: (574) 264-7163
Fax: (574) 264-7364
www.forestriverinc.com
www.forestriveraccessories.com



Learn More
Scan this barcode using
a QR Reader on your
smart phone to learn
more about Forest River.



A Berkshire Hathaway company.

All specifications contained herein are based on the latest product information at time of printing. Forest River reserves the right to make changes in prices, colors, materials, equipment and specifications at any time without notice and assumes no responsibility for any errors in this brochure. Photographs in this brochure may show props and optional equipment. All units are shipped F.O.B. Elkhart, IN CONSULT YOU LOCAL DEALER FOR WARRANTY INFORMATION

© 2015 Forest River Inc.
A Berkshire Hathaway company